

Catalogue No. **RSILD/DAK - Driver side kit**

Catalogue No. **RSILD/PAK - Passenger side kit**

FRONT ANCHOR



Driver side FRONT anchor fixture (illustrated).
Product will fit ALL Series frames.

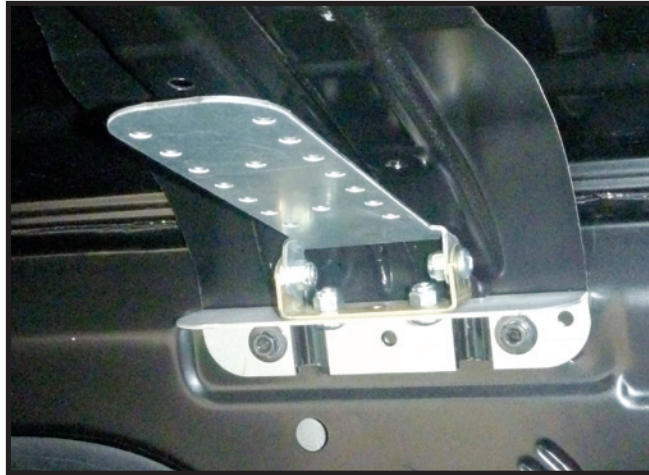
Front Anchor kit includes:

- 1 bracket
- 2x M6 bolts
- 2x Spring washers
- Bracket attaches with 2x M6 bolts & spring washers to existing factory fitted nuts

Other fitment supplied separately.

Front driver & passenger anchors not interchangeable.

MIDDLE ANCHOR



Driver side MIDDLE anchor fixture (illustrated).
Product will fit 8 Series frame.

Middle Anchor kit includes:

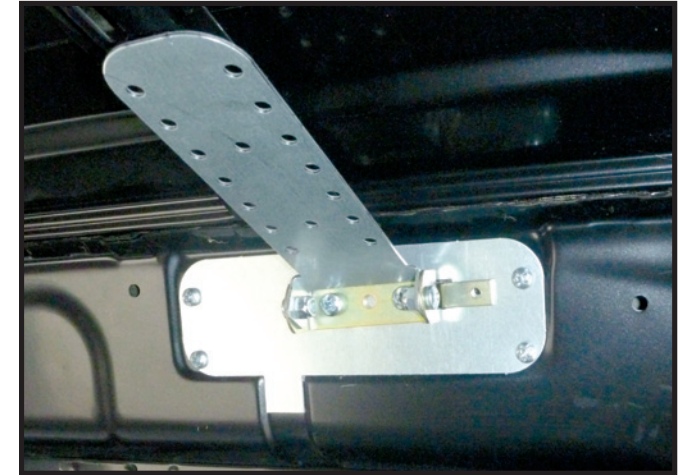
- 1 bracket only

Other fitment not included.

Middle driver & passenger anchors not interchangeable.

Attaches to existing factory fitted M6 bolts & nuts.

REAR TEMPLATE



Driver side REAR anchor fixture (illustrated).
Template with hole location for use with existing cant rail fitment kits. Product fits 8 Series frame in conjunction with Middle fitment.

Rear Template kit includes:

- 1 template only

Position template to location holes for use with standard cant rail fitment kits.

Other fitment not included.

Driver & passenger template reversible.